

RESEARCH

Open Access

Helical tomotherapy with concurrent capecitabine for the treatment of inoperable pancreatic cancer

Jeong-Seon Ji¹, Chi-Wha Han^{*2}, Jeong-Won Jang¹, Bo-In Lee¹, Byung-Wook Kim¹, Hwang Choi¹, Ji-Yoon Kim³, Young-Nam Kang⁴, Chul-Seung Kay⁵ and Ihl-Bohng Choi⁶

Abstract

Background: Helical tomotherapy, an advanced intensity-modulated radiation therapy with integrated CT imaging, permits highly conformal irradiation with sparing of normal tissue. Capecitabine, a pro-drug of 5-FU that induces thymidine phosphorylase can achieve higher levels of intracellular 5-FU when administered concurrently with radiation. We evaluated the feasibility as well as the clinical outcome of concurrent administration of capecitabine with tomotherapy in patients with advanced pancreatic cancer.

Methods: Nineteen patients with advanced pancreatic cancer including primarily unresectable disease and recurrence after curative surgery were included in the study. Two planning target volumes (PTV) were entered: PTV1 is gross tumor volume; and PTV2, the volume of the draining lymph nodes. The total doses to target 1 and target 2 were 55 and 50 Gy, respectively. Capecitabine at 1600 mg/m²/day was administered on each day of irradiation.

Results: Twenty six measurable lesions were evaluated. Overall in-field response rate was 42.3%; partial responses were achieved in 53.3% of the pancreatic masses, 28.6% of distant metastatic lesions and 25.0% of regional lymph nodes. The median duration of follow-up after tomotherapy was 6.5 months. None of the lesions showed in-field progression. Treatment was well tolerated with only minor toxicities such as grade 1 nausea (one patient), grade 1 hand-foot syndrome (one patient) and grade 1/2 fatigue (three patients).

Conclusions: Helical tomotherapy with concurrent capecitabine is a feasible option without significant toxicities in patients with advanced pancreatic cancer. We achieved excellent conformal distribution of radiation doses and minimal treatment-related toxicities with promising target volume responses.

Background

Surgical resection is the standard treatment for localized non-metastatic pancreatic cancer. Data from the Surveillance Epidemiology and End Results (SEER) registry indicate that only about 10% of cases are able to undergo surgery with curative intent, and only a very small number of those are cured because of the high incidence of local relapse and early metastases [1]. Many clinical trials have been carried out using chemotherapy with or without radiation therapy following curative surgical resection, with the aim of preventing local and distant recurrence. With the exception of gemcitabine, neither chemotherapy nor radiation improved survival [2]. For

those with locally advanced unresectable or metastatic disease, systemic chemotherapy remains the principal means of improving survival or alleviating cancer-related symptoms

The radiation-sensitive structures in the upper abdomen (small intestine, stomach, kidneys, liver, and spinal cord), prevent conventional radiation therapy to the pancreas or to the pancreatic bed from delivering adequate doses, and irradiation is usually accompanied by severe gastrointestinal intolerance [3]. This may explain in part the absence of survival benefit in patients with locally advanced pancreatic cancer who receive radiation therapy alone. However, 5-FU-based concurrent chemoradiation yields modest survival benefits in patients with locally advanced unresectable pancreatic cancer [4,5]. Despite these findings, survival from pancreatic cancer is still poor, with approximately 23% of patients alive 12

* Correspondence: hcvmd@catholic.ac.kr

² Department of Internal Medicine, The Catholic University of Korea, St Mary's Hospital, 62, Youidodong, Youngdeoungpogu, Seoul, 150-713, Republic of Korea

Full list of author information is available at the end of the article

months following diagnosis, and 5% alive at 5 years [1]. New radiation techniques including intensity modulated radiation therapy (IMRT), image guided radiation therapy (IGRT) and stereotactic radiosurgery make it possible to deliver optimally high doses to the target volume with minimal effect on adjacent radiosensitive tissues [6,7]. Helical tomotherapy is a sophisticated image-guided IMRT based on the ring gantry concept, employing a combination of a megavoltage CT scanner and a linear accelerator [8,9]. Capecitabine, a prodrug of 5-FU, is absorbed inert from the gastrointestinal tract and selectively metabolized to 5-FU in tumor cells. This selective conversion achieves higher levels of 5-FU in the tumor cells than can be obtained by intravenous administration of 5-FU. Additionally, radiation can magnify the tumor selectivity of capecitabine by upregulating thymidine phosphorylase in the tumor cells [10]. Capecitabine also acts as a radiation sensitizer by disturbing tumor cell DNA synthesis [11].

In this paper, we report our experience of concurrent administration of capecitabine with helical tomotherapy in patients with inoperable or recurrent pancreatic cancer. We achieved a highly conformal distribution of radiation doses and minimal treatment-related toxicities with excellent target volume responses.

Methods

Patient population

Between October 2005 and February 2008, nineteen patients with pancreatic cancer were treated with concurrent chemoradiation using helical tomotherapy and capecitabine. They included patients with locally advanced and unresectable disease, and those with local

relapse following curative resection or with metastatic disease. Patients who were older than 18 years, who understood the written informed consent document and who were willing to sign it, were eligible for inclusion. The medical records of these patients were reviewed retrospectively. This review was approved by the hospital institutional ethical committee, and written informed consent was obtained from each patient.

Radiotherapy

Radiotherapy was provided by helical tomotherapy (Tomotherapy Incorporated, Madison, WI, USA). Two planning target volumes (PTV) were entered for each patient [3]. PTV1 consisted of the gross tumor volume (GTV) as determined by CT scan, or the tumor bed (in post-surgical cases). PTV2 consisted of the draining lymph nodes, comprising the nodes in the porta hepatis, celiac axis, superior mesenteric and retroperitoneal areas. PTV2 extended 2 cm below the target volume and did not have to include the inferior mesenteric nodes. Both targets were treated simultaneously in 25 daily fractions, 5 days a week. Helical tomotherapy delivered 55 Gy to PTV1 and 50 Gy to PTV2. In some patients with distant metastases (liver or lung), the metastatic lesions were also targeted as another PTV. The distribution of isodoses in the helical tomotherapy treatment planning is shown in Figure 1. The dose and volume constraints for the normal structures are listed in Table 1. Figure 2 is an average delivered dose-volume histogram for GTV and organ at risk. Capecitabine (Xeloda; Roche Pharmaceuticals, Nutley, NJ) was given at 1600 mg/m²/day in two doses on each day of radiation and continued for the duration of the radiation therapy [3].

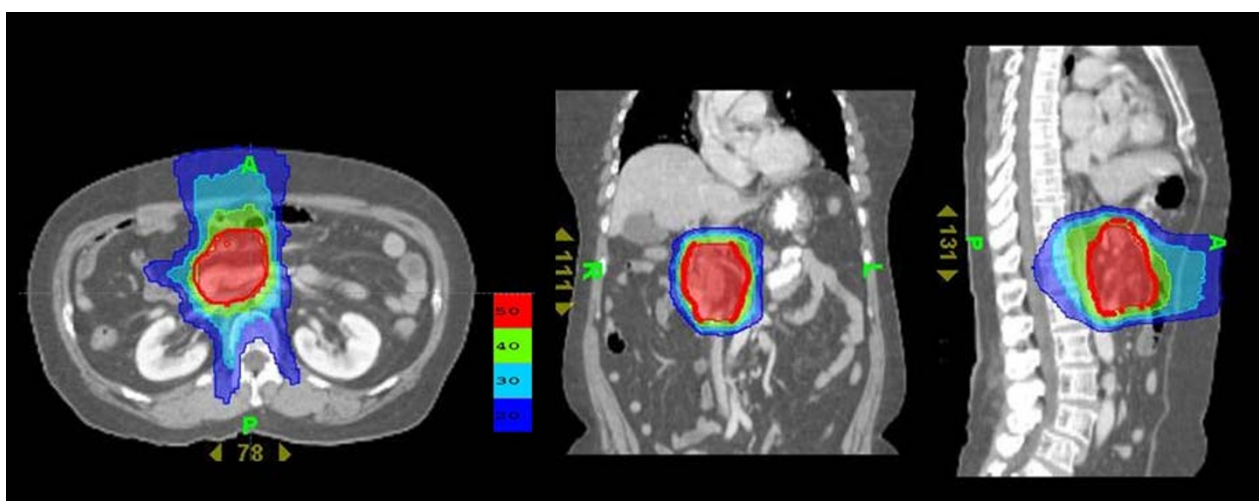


Figure 1 Distribution of isodoses in the planning of helical tomotherapy in patients with advanced pancreatic cancer; axial (left), coronal (center) and sagittal (right) representations. Dose displayed in Gy. The different doses are represented by different colors. Red represents the target volume dose.

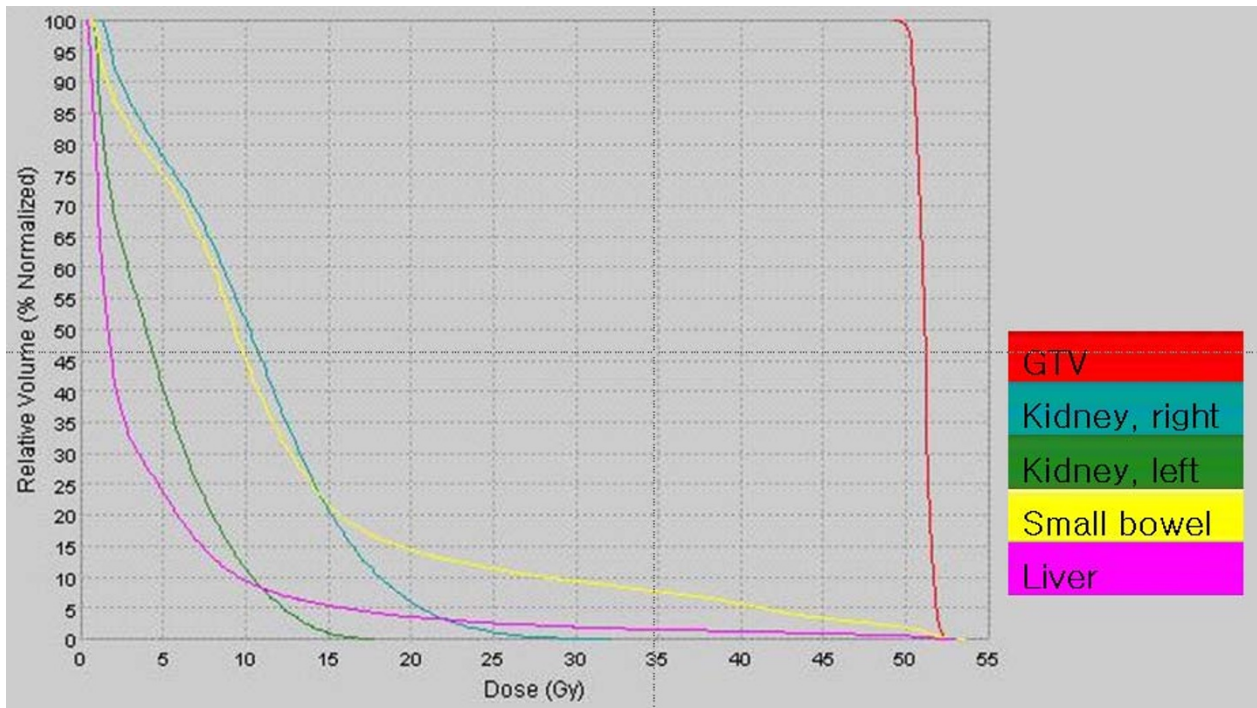


Figure 2 Average dose-volume histogram for GTV and organs at risk. Patients were prescribed doses of 55 Gy to PTV1 and 50 Gy to PTV2. GTV = gross tumor volume, PTV = planning target volume.

Toxicity assessment

Acute toxicity (occurring within 90 days of radiotherapy) was scored using the National Cancer Institute Common Toxicity Criteria (NCI CTC), version 2, morbidity scales [12]. Late toxicity was scored using the Radiation Therapy Oncology Group (RTOG) scale for late toxicity [13]. Patients were evaluated on a weekly basis.

Response assessment

The response of each targeted lesion (defined as the in-field tumor response) was evaluated by comparing, by the RECIST criteria, tumor size in pre- and post-treatment CT images 8 weeks after completion of concurrent chemoradiation therapy (CCRT). Two different radiologist evaluated the response rate.

Statistical methods

All statistics are descriptive. Survival was compared using the Kaplan-Meier method. Statistical analyses were performed using SPSS software, version 15.0, Chicago.

Results

Patient and tumor characteristics

The patient characteristics are shown in Table 2. Twelve were male and seven were female. Median age was 64.0 (range, 46 - 83). Median duration from diagnosis to CCRT was 1.5 months (range, 0.2 - 63.3). The patients were classified with respect to disease status as follows: 1) eight had primarily unresectable disease without metastasis, and no history of previous treatment, 2) three had local relapse following complete resection, and 3) eight

Table 1: Dose and volume constraints for organs at risk.

Structure	Maximum dose constraint (Gy)	Volume above limit (%)	Maximum dose (Gy)	Minimum dose (Gy)
Liver	45.00	10.00	52.83	0.30
Right kidney	1.00	1.00	20.60	0.38
Left kidney	15.00	20.00	20.57	0.54
Small bowel	45.00	10.00	53.34	0.18
Stomach	50.00	10.00	52.95	0.44
Duodenum	10.00	1.00	14.07	0.60

Table 2: Patient and tumor characteristics

Patient	Sex	Age	Primary tumor site	Previous operation	Previous chemotherapy	TNM (stage)	Duration of follow-up after diagnosis (months)	Site of metastasis	Site of tomotherapy
1	F	53	Head	No	No	T4N1M0(IVA)	2.9		Pancreas
2	M	61	Body	Yes	Gemcitabine #6, Cisplatin/Capecitabine	T3N0M0 (II)	4.9		Pancreas
3	M	67	Tail	No	No	T4N1M0(IVA)	1.5		Pancreas
4	F	76	Body	No	Gemcitabine #5	T4N1M0(IVA)	7.6		Pancreas
5	M	57	Body	No	Gemcitabine/Capecitabine	T4N1M1(IVB)	1.2	Liver	Pancreas
6	F	64	Body, tail	No	No	T4N1M0(IVA)	0.2		Pancreas
7	M	67	Body	No	No	T4N1M0(IVA)	1		Pancreas
8	F	71	Body	No	Gemcitabine/Cisplatin #3	T3N1M1(IVB)	8	Liver	Pancreas
9	M	46	Body, tail	No	No	T4N1M0(IVA)	0.7	Peritoneum	Pancreas
10	F	80	Body, tail	No	No	T3N1M0(III)	2.3		Pancreas
11	F	64	Tail	No	Gemcitabine/Cisplatin #1	T4N1M1(IVB)	1.3	Liver	Pancreas, Liver
12	M	59	Head	No	No	T3N1M1(IVB)	1.4	Liver	Pancreas
13	M	68	Body, tail	No	No	T4N1M1(IVB)	0.6	Liver	Pancreas, Liver
14	F	54	Neck, body	No	Gemcitabine/5 - FU #2	T3N1M0(III)	5.5		Pancreas
15	M	57	Body	Yes	Gemcitabine, Cisplatin/5 FU #6	T4N1M1(IVB)	5.2	Liver	Pancreas
16	M	83	Head	No	No	T4N1M0(IVA)	0.2		Pancreas
17	M	54	Head	No	No	T4N1M0(IVA)	0.2		Pancreas
18	M	64		Yes	Gemcitabine/xeloda #9, Irinotecan #2	M1(IVB)	63.3	Lung	Lung
19	M	58	Head	No	No	T4N1M0(IVA)	2.4		Pancreas

had metastatic disease in the liver, lung or peritoneum (three had metastases on first diagnosis and five had metastases that developed during the course of disease). Eight patients had previously received systemic chemotherapy.

In-field tumor responses

Twenty six lesions were targeted in nineteen patients (Table 3). They included 15 pancreatic masses, 4 regional metastatic lymph nodes and 7 distant metastatic lesions. Of the 15 pancreatic masses, 8 showed partial responses (PR, 53.3%) and 7 stable disease (SD, 46.6%). Of the 4 regional metastatic lymph nodes, one showed PR (25.0%) and three, SD (75.0%). Of the seven distant metastatic lesions (six hepatic metastases and one pulmonary metastasis), 2 (a pulmonary lesion and a hepatic lesion) showed PR (28.6%) and 5, SD (71.4%). Although there

were no complete responses (CR), the overall response rate was 42.3%. It is of interest that no target lesions showed in-field progression during the observation period. Figure 3 illustrates a typical case of a pancreatic lesion treated with CCRT.

Prognosis and survival

The median duration of follow-up after CCRT was 6.5 months (range, 1.1-17.6, Table 4). The one-year survival rate was 36.8%, and median survival time was 6.5 months (range 1.1-21.0). The median survival time in group I (patients with locally advanced disease without metastases) was 9.25 months (range, 2-18.4, Table 5). In comparison with patients who had locally advanced and unresectable disease without metastases or a previous chemotherapy history, the others (those who had metastases at the time of CCRT, and a case with local relapse

Table 3: In-field tumor response rates of the target lesions after tomotherapy and concurrent capecitabine treatment

Target lesions	CR	PR	SD	PD
Pancreatic mass (n = 15)	0 (0)	8 (53.3)	7 (46.7)	0 (0)
Regional lymph nodes (n = 4)	0 (0)	1 (25.0)	3 (75)	0 (0)
Distant metastasis (n = 7)	0 (0)	2 (28.6)	5 (71.4)	0 (0)
Liver (n = 6)	0 (0)	1 (16.7)	5 (83.3)	0 (0)
Lung (n = 1)	0 (0)	1 (100)	0 (0)	0 (0)
Overall (n = 26)	0 (0)	11 (42.3)	15 (57.7)	0 (0)

CR, complete response; PR, partial response; SD, stable disease; PD, progressive disease
Numbers in parentheses are percentages

after previous curative surgery as well as those with a history of previous chemotherapy) showed poor survival ($p = 0.063$); 4.4 months (range, 1.1-21) versus 12.55 months (range, 6.5-18.4). Of the patients in group I, those who had no history of previous chemotherapy survived better than those with a history of previous chemotherapy ($p = 0.0009$); 12.55 months (range, 6.5-18.4) versus 3.9 months (range, 2-5.8).

Progression of disease outside the targeted tumor volume (defined as the out-field progression) occurred in 7 patient. The median time to out-field progression was 3.8 months (range 2.2-7.3) with or without systemic chemotherapy following CCRT.

Toxicity

Acute toxicity is summarized in Table 6. As shown, only minor toxicities developed. The most common acute toxicity was grade 1 or 2 fatigue that occurred 2 to 3 weeks after the start of tomotherapy (three patients, 16.7%). Intriguingly, no treatment was interrupted due to gastrointestinal side effects. Only grade 1 nausea developed in one patient (5.6%). Grade 1 hand-foot syndrome related to oral capecitabine also developed in one patient (5.6%). None experienced hematologic toxicities during the treatment. All toxicities were manageable medically and regressed spontaneously, and they did not interfere with the scheduled radiotherapy. There were no treatment-related deaths and no grade 3 or 4 toxicity. Therefore, treatment was well tolerated by all patients.

Discussion

The majority of pancreatic cancer patients have advanced disease at the time of diagnosis due to a lack of symptoms and signs. Without treatment, mean survival time is 4-6 months and overall 5-year survival remains less than 5%. [14]. The only curative option is surgery, but only 10-20% of patients have tumors appropriate for radical resection [15]. Advanced pancreatic cancer is generally incurable and all therapies have significant limitations. The response to systemic chemotherapy is poor, with an approximately 20% response rate. The conventional radiation dose to the tumor volume is not large enough to cure patients because pancreatic tumors move markedly as patients breathe, and are surrounded by the duode-

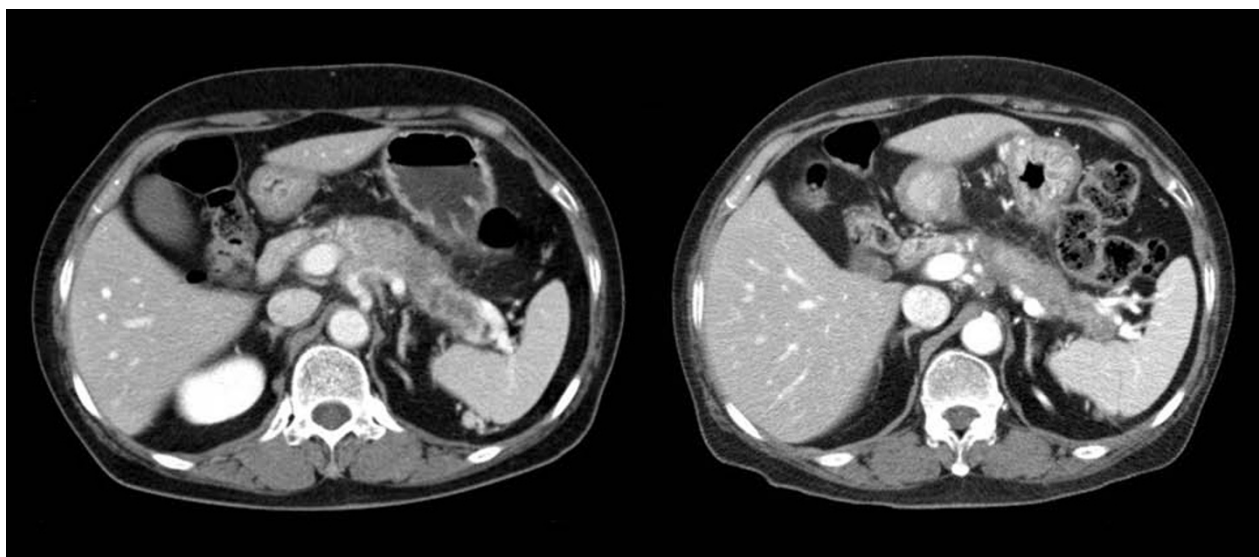


Figure 3 Abdominal CTs before (left) and after (right) helical tomotherapy with concurrent capecitabine. Two months after helical tomotherapy the volume of the pancreatic tumor is significantly reduced.

Table 4: Clinical outcomes in the nineteen patients treated with tomotherapy and concurrent capecitabine

Patient	Overall In-field tumor response	Duration of tumor response (months)	Treatment-related toxicity	Duration of follow-up after tomotherapy (months)	Out-field progression state	Cause of death other than cancer progression	Duration of survival after tomotherapy (months)
1	Stable disease	5.9	fatigue (grade 2)	7.3	Progressed		7.3
2	Partial response		hand foot syndrome (grade 1)	3.2			4.8
3	Stable disease			10.7			11.2
4	Stable disease	3.8		5.8	Progressed		5.8
5				1.1		Pneumonia	1.1
6	Partial response		fatigue (grade 2)	6.8			13.9
7	Stable disease	6.9		15	Progressed		16.3
8				1.8			1.9
9	Partial response	2.4	nausea (grade 1)	4.4	Progressed		4.4
10	Partial response			13.6			13.9
11	Stable disease	4.1	fatigue (grade 1)	4.1	Stable disease	Pulmonary thromboembolism	4.1
12	Stable disease	2.2		3.4	Progressed		3.9
13	Stable disease	2.5		6.5	Progressed		6.5
14				2		DUB, Pneumonia	2
15	Stable disease			10.5			10.5
16	Partial response	7.3		7.3	Stable disease	Pneumonia	7.3
17	Partial response			14.9			18.4
18	Partial response			17.6			21
19	Partial response	3.2		6.2	Progressed		6.5

DUB, duodenal malignant ulcer bleeding

num, which is the dose-limiting organ [16]. Compared with chemotherapy alone or radiotherapy alone, chemoradiotherapy prolongs median survival somewhat, to approximately 9-12 months, in those with locally advanced unresectable disease [5].

Helical tomotherapy, a new radiotherapy system, is a helical IMRT with integrated CT imaging, offering highly conformal radiation with normal tissue sparing. The basis of image guidance is utilizing daily images gained in the treatment position in order to visualize daily organ variations and setup errors [17-19]. The radiation is discharged as a fan beam by a linear accelerator mounted on a turning gantry and is adjusted by a rapid pneumatically driven binary slit collimator [20]. The speed of gantry rotation and table movement is uniform for the entire fraction. Hence helical tomotherapy can provide significant conformal dose distributions at numerous locations [21-24].

Helical tomotherapy can treat multiple lesions more rapidly than conventional radiotherapy, for which multiple target points are necessary [20]. Moreover it is an ideal device for delivering multifocal, high-dose radiation without a significant increase in toxicity [9,25]. Thus it allows us to treat patients with multiple targets including metastatic lesions.

The ideal concurrent chemotherapeutic agent in the therapy of pancreatic cancer should have both a systemic effect and radiosensitizing properties [16]. Capecitabine has a pronounced radiosensitizing effect on tumor cells such that DNA strand breakage induced by radiation is more difficult to repair [11]. The regimen described here takes advantage of the tumor-selective ability of capecitabine to enhance radiation effects within the tumor but not in the surrounding normal tissues. This can be ascribed to a higher 5-FU concentration in tumor cells and the induction of thymidine phosphorylase by the

Table 5: Survival of pancreatic cancer patients treated with tomotherapy and concurrent capecitabine

Group	Characteristics	Median duration of survival (months)
I	Locally advanced without metastasis (n = 10)	9.25 (2.00-18.4)
	No previous chemotherapy (n = 8)	12.55 (6.50-18.4)
	Previous chemotherapy (n = 2)	3.90 (2.00, 5.8)
II	Locally relapsed without metastasis following complete resection (n = 1)	4.80 (4.80)
III	Metastatic disease (n = 8)	4.25 (1.10-21.00)
	De novo (n = 3)	4.40 (3.90-6.50)
	Relapsed (n = 5)	4.10 (1.10-21.00)

Data in parentheses are ranges of survival times

irradiation [10]. Also, the use of capecitabine is attractive because it is absorbed as an inert drug, causing little direct toxicity in the gastrointestinal tract.

Ben-Josef et al [3] treated 15 patients with unresectable or recurrent pancreatic cancer with IMRT and concurrent capecitabine. In that study, the regimen was well tolerated without significant toxicities, and efficacy was encouraging.

Another basis for offering radiotherapy to patients with pancreatic cancer is palliation of symptoms due to local invasion, such as biliary and gastrointestinal obstruction [26]. The drawbacks of radiotherapy include the acute and chronic toxicities of radiotherapy, particularly when the indication is palliation. Because of its ability to restrict the dose to normal organs and minimize radiation toxicities, helical tomotherapy may be an ideal palliative option for challenging cases of pancreatic cancer [27].

In our study, the overall in-field tumor response rate was 42.3%. Previous studies have reported 10-50% response rates for locally advanced pancreatic cancer with chemoradiotherapy [28-32]. The high response rate in our study is due to in-field assessment of responses. Considering the advanced stage of our patients, the in-field response rate is encouraging. It may be possible to increase this response rate by increasing the dose of capecitabine.

It may be noted that helical tomotherapy with concurrent capecitabine yielded excellent disease control within the radiation field, with an in-field disease control rate of essentially 100%. This could be thought to be a significant therapeutic benefit.

Median overall survival after tomotherapy was only 6.5 months. This was because of advanced stages of our study population (tumor stages III or IV). Our study included patients with locally advanced disease, local relapse following complete resection, and metastases.

Patients who had locally advanced disease without metastasis or a previous history of chemotherapy showed a tendency to survive longer than the others (12.55 versus 4.4 months) after tomotherapy. In our opinion, tomotherapy with concurrent capecitabine should be the first option for inoperable pancreatic cancer, especially in patients without metastases or a previous history of chemotherapy.

Although our patients were elderly, with a median age of 64, treatment was well tolerated. The majority of treatment-related toxicities were mild and transient. Only grade 1/2 fatigue, nausea and hand-foot syndrome developed, and they subsided with symptomatic care and without prematurely stopping radiotherapy. There was no direct treatment-related grade 3/4 toxicity or death. Therefore helical tomotherapy is a safe option in the treatment of advanced pancreatic cancer.

This study had several limitations. First, the number of cases was low. Second, the heterogeneity of the study population made direct comparison with other studies difficult. Third, long term treatment effects and late toxicities remain to be evaluated because the median follow-up time in our study was relatively short.

Although there was no in-field progression during the observation period, out-field progression occurred in seven patients. This observation provides a rationale for follow-up systemic chemotherapy after tomotherapy to

Table 6: Treatment-related toxicity

	Grade 1	Grade 2
Fatigue	1 (5.6)	2 (11.1)
Nausea	1 (5.6)	0 (0)
Hand-foot syndrome	1 (5.6)	0 (0)

Data in parentheses are percentages

prevent or delay out-field progression. Hence, subsequent chemotherapy such as gemcitabine alone or erlotinib combined with gemcitabine should be performed in eligible patients [33,34].

There are only two examples of the clinical application of helical tomotherapy for locally advanced pancreatic cancer [35]. To the best of our knowledge, this is first comprehensive analysis of the clinical application of helical tomotherapy for a group of inoperable or recurrent pancreatic cancers.

Conclusions

Our study demonstrates that helical tomotherapy with concurrent capecitabine is a feasible and safe option for locally advanced unresectable or metastatic pancreatic cancer. Our preliminary data yielded a high local control rate. Because of its ability to irradiate multiple targets simultaneously, helical tomotherapy could be an ideal palliative option for challenging cases of pancreatic cancer with metastases. Further large scale clinical trials are needed to verify the efficacy and safety of helical tomotherapy with concurrent capecitabine for treating advanced pancreatic cancer. Also, careful selection of those patients that stand to benefit from this regimen is needed.

Competing interests

The authors declare that they have no competing interests.

Authors' contributions

JJ participated in data collection, performed the statistical analysis and drafted the manuscript. CH conceived of the study, and participated in its design and coordination. JJ participated in data collection and helped to draft the manuscript. JK helped in data collection and analysis. YK helped in data collection and drafted the manuscript. BL, BK, HC, CK and IC helped to data analysis and drafted the manuscript. All authors read and approved the final manuscript.

Author Details

¹Department of Internal Medicine, The Catholic University of Korea, Incheon St. Mary's Hospital, 665, Bupyeong 6-dong, Bupyeong-gu, Incheon, 403-720, Republic of Korea, ²Department of Internal Medicine, The Catholic University of Korea, St Mary's Hospital, 62, Youidodong, Youngdeoungpogu, Seoul, 150-713, Republic of Korea, ³Department of Radiation Oncology, The Catholic University of Korea, St Mary's Hospital, 62, Youidodong, Youngdeoungpogu, Seoul, 150-713, Republic of Korea, ⁴Department of Radiation Oncology, The Catholic University of Korea, Seoul St. Mary's Hospital, 505 Banpo-dong, Seocho-gu, Seoul 137-040, Republic of Korea, ⁵Department of Radiation Oncology, The Catholic University of Korea, Incheon St. Mary's Hospital, 665, Bupyeong 6-dong, Bupyeong-gu, Incheon, 403-720, Republic of Korea and ⁶Cyberknife Clinic, Wooidul Spine Hospital, 47-4, Chungdamdong, Kangnamgu, Seoul, Republic of Korea

Received: 19 March 2010 Accepted: 28 June 2010

Published: 28 June 2010

References

- Shalb Y, Davila J, Naumann C, El-Serag H: **The impact of curative intent surgery on the survival of pancreatic cancer patients: a U.S. Population-based study.** *The American journal of gastroenterology* 2007, **102**:1377-1382.
- Oettle H, Post S, Neuhaus P, Gellert K, Langrehr J, Ridwelski K, Schramm H, Fahlke J, Zuelke C, Burkart C, Gutberlet K, Kettner E, Schmalenberg H, Weigang-Koehler K, Bechstein W, Niedergethmann M, Schmidt-Wolf I, Roll L, Doerken B, Riess H: **Adjuvant chemotherapy with gemcitabine vs observation in patients undergoing curative-intent resection of pancreatic cancer: a randomized controlled trial.** *JAMA* 2007, **297**:267-277.
- Ben-Josef E, Shields AF, Vaishampayan U, Vaitkevicius V, El-Rayes BF, McDermott P, Burmeister J, Bossenberger T, Philip PA: **Intensity-modulated radiotherapy (IMRT) and concurrent capecitabine for pancreatic cancer.** *Int J Radiat Oncol Biol Phys* 2004, **59**:454-459.
- Moertel CG, Childs DS, Reitemeier RJ, Colby MY, Holbrook MA: **Combined 5-fluorouracil and supervoltage radiation therapy of locally unresectable gastrointestinal cancer.** *The Lancet* 1969, **2**:865-867.
- Moertel CG, Frytak S, Hahn RG, O'Connell MJ, Reitemeier RJ, Rubin J, Schutt AJ, Weiland LH, Childs DS, Holbrook MA, Lavin PT, Livstone E, Spiro H, Knowlton A, Kalser M, Barkin J, Lessner H, Mann-Kaplan R, Ramming K, Douglas HO Jr, Thomas P, Nave H, Bateman J, Lokich J, Brooks J, Chaffey J, Corson JM, Zamcheck N, Novak JW: **Therapy of locally unresectable pancreatic carcinoma: a randomized comparison of high dose (6000 rads) radiation alone, moderate dose radiation (4000 rads + 5-fluorouracil), and high dose radiation + 5-fluorouracil: The Gastrointestinal Tumor Study Group.** *Cancer* 1981, **48**:1705-1710.
- Onimaru R, Kitamura K, Shimizu S, Shirato H: **Organ motion in image-guided radiotherapy: lessons from real-time tumor-tracking radiotherapy.** *International Journal of Clinical Oncology* 2007, **12**:8-16.
- Shirato H, Shimizu S, Kitamura K, Onimaru R: **Organ motion in image-guided radiotherapy: lessons from real-time tumor-tracking radiotherapy.** *International Journal of Clinical Oncology* 2007, **12**:8-16.
- Welsh JS, Patel RR, Ritter MA, Harari PM, Mackie TR, Mehta MP: **Helical tomotherapy: an innovative technology and approach to radiation therapy.** *Technol Cancer Res Treat* 2002, **1**:311-316.
- Mackie TR, Balog J, Ruchala K, Shepard D, Aldridge S, Fitchard E, Reckwerdt P, Olivera G, McNutt T, Mehta M: **Tomotherapy.** *Semin Radiat Oncol* 1999, **9**:108-117.
- Sawada N, Ishikawa T, Sekiguchi F, Tanaka Y, Ishitsuka H: **X-ray irradiation induces thymidine phosphorylase and enhances the efficacy of capecitabine (Xeloda) in human cancer xenografts.** *Clin Cancer Res* 1999, **5**:2948-2953.
- Bai YR, Wu GH, Guo WJ, Wu XD, Yao Y, Chen Y, Zhou RH, Lu DQ: **Intensity modulated radiation therapy and chemotherapy for locally advanced pancreatic cancer: results of feasibility study.** *World J Gastroenterol* 2003, **9**:2561-2564.
- Trotti A, Byhardt R, Stetz J, Gwede C, Corn B, Fu K, Gunderson L, McCormick B, Morrisintegral M, Rich T, Shipley W, Curran W: **Common toxicity criteria: version 2.0. an improved reference for grading the acute effects of cancer treatment: impact on radiotherapy.** *International journal of radiation oncology, biology, physics* 2000, **47**:13-47.
- Cox JD, Stetz J, Pajak TF: **Toxicity criteria of the Radiation Therapy Oncology Group (RTOG) and the European Organization for Research and Treatment of Cancer (EORTC).** *International journal of radiation oncology, biology, physics* 1995, **31**:1341-1346.
- Shankar A, Russell RC: **Recent advances in the surgical treatment of pancreatic cancer.** *World J Gastroenterol* 2001, **7**:622-626.
- Ghaneh P, Slavin J, Sutton R, Hartley M, Neoptolemos JP: **Adjuvant therapy in pancreatic cancer.** *World J Gastroenterol* 2001, **7**:482-489.
- Crane CH, Varadhachary G, Pisters PW, Evans DB, Wolff RA: **Future chemoradiation strategies in pancreatic cancer.** *Semin Oncol* 2007, **34**:335-346.
- Li XA, Qi XS, Pitterle M, Kalakota K, Mueller K, Erickson BA, Wang D, Schultz CJ, Firat SY, Wilson JF: **Interfractional variations in patient setup and anatomic change assessed by daily computed tomography.** *Int J Radiat Oncol Biol Phys* 2007, **68**:581-591.
- Xing L, Thorndyke B, Schreiber E, Yang Y, Li TF, Kim GY, Luxton G, Koong A: **Overview of image-guided radiation therapy.** *Med Dosim* 2006, **31**:91-112.
- Jaffray D, Kupelian P, Djemil T, Macklis RM: **Review of image-guided radiation therapy.** *Expert Rev Anticancer Ther* 2007, **7**:89-103.
- Stenzler F, Schubert K, Sroka-Perez G, Kalz J, Debus J, Herfarth K: **Helical tomotherapy. Experiences of the first 150 patients in Heidelberg.** *Strahlenther Onkol* 2008, **184**:8-14.
- Bauman G, Yartsev S, Rodrigues G, Lewis C, Venkatesan VM, Yu E, Hammond A, Perera F, Ash R, Dar AR, Lock M, Bailly L, Coad T, Trenka K, Warr B, Kron T, Battista J, Van Dyk J: **A prospective evaluation of helical tomotherapy.** *Int J Radiat Oncol Biol Phys* 2007, **68**:632-641.

22. Han C, Liu A, Schultheiss TE, Pezner RD, Chen YJ, Wong JY: **Dosimetric comparisons of helical tomotherapy treatment plans and step-and-shoot intensity-modulated radiosurgery treatment plans in intracranial stereotactic radiosurgery.** *Int J Radiat Oncol Biol Phys* 2006, **65**:608-616.
23. Hui SK, Kapatoes J, Fowler J, Henderson D, Olivera G, Manon RR, Gerbi B, Mackie TR, Welsh JS: **Feasibility study of helical tomotherapy for total body or total marrow irradiation.** *Med Phys* 2005, **32**:3214-3224.
24. Kron T, Grigorov G, Yu E, Yartsev S, Chen JZ, Wong E, Rodrigues G, Trenka K, Coad T, Bauman G, Van Dyk J: **Planning evaluation of radiotherapy for complex lung cancer cases using helical tomotherapy.** *Phys Med Biol* 2004, **49**:3675-3690.
25. Hong TS, Welsh JS, Ritter MA, Harari PM, Jaradat H, Mackie TR, Mehta MP: **Megavoltage computed tomography: an emerging tool for image-guided radiotherapy.** *Am J Clin Oncol* 2007, **30**:617-623.
26. Haslam JB, Cavanaugh PJ, Stroup SL: **Radiation therapy in the treatment of irresectable adenocarcinoma of the pancreas.** *Cancer* 1973, **32**:1341-1345.
27. Penagaricano JA, Papanikolaou N, Yan Y, Youssef E, Ratanatharathorn V: **Feasibility of cranio-spinal axis radiation with the Hi-Art tomotherapy system.** *Radiother Oncol* 2005, **76**:72-78.
28. Ishii H, Okada S, Tokuyue K, Nose H, Okusaka T, Yoshimori M, Nagahama H, Sumi M, Kagami Y, Ikeda H: **Protracted 5-fluorouracil infusion with concurrent radiotherapy as a treatment for locally advanced pancreatic carcinoma.** *Cancer* 1997, **79**:1516-1520.
29. Boz G, De Paoli A, Innocente R, Rossi C, Tosolini G, Pederzoli P, Talamini R, Trovo MG: **Radiotherapy and continuous infusion 5-fluorouracil in patients with nonresectable pancreatic carcinoma.** *Int J Radiat Oncol Biol Phys* 2001, **51**:736-740.
30. Li CP, Chao Y, Chi KH, Chan WK, Teng HC, Lee RC, Chang FY, Lee SD, Yen SH: **Concurrent chemoradiotherapy treatment of locally advanced pancreatic cancer: gemcitabine versus 5-fluorouracil, a randomized controlled study.** *Int J Radiat Oncol Biol Phys* 2003, **57**:98-104.
31. Murphy JD, Adusumilli S, Griffith KA, Ray ME, Zalupski MM, Lawrence TS, Ben-Josef E: **Full-dose gemcitabine and concurrent radiotherapy for unresectable pancreatic cancer.** *Int J Radiat Oncol Biol Phys* 2007, **68**:801-808.
32. Shintchi H, Takao S, Noma H, Matsuo Y, Mataka Y, Mori S, Aikou T: **Length and quality of survival after external-beam radiotherapy with concurrent continuous 5-fluorouracil infusion for locally unresectable pancreatic cancer.** *Int J Radiat Oncol Biol Phys* 2002, **53**:146-150.
33. Burris HA, Moore MJ, Andersen J, Green MR, Rothenberg ML, Modiano MR, Cripps MC, Portenoy RK, Storniolo AM, Tarassoff P, Nelson R, Dorr FA, Stephens CD, Von Hoff DD: **Improvements in survival and clinical benefit with gemcitabine as first-line therapy for patients with advanced pancreas cancer: a randomized trial.** *Journal of clinical oncology* 1997, **15**:2403-2413.
34. Moore MJ, Goldstein D, Hamm J, Figer A, Hecht JR, Gallinger S, Au HJ, Murawa P, Walde D, Wolff RA, Campos D, Lim R, Ding K, Clark G, Voskoglou-Nomikos T, Ptasynski M, Parulekar W: **Erlotinib plus gemcitabine compared with gemcitabine alone in patients with advanced pancreatic cancer: a phase III trial of the National Cancer Institute of Canada Clinical Trials Group.** *Journal of clinical oncology* 2007, **25**:1960-1966.
35. Chargari C, Campana F, Beuzeboc P, Zefkili S, Kirova YM: **Preliminary experience of helical tomotherapy for locally advanced pancreatic cancer.** *shi jie chang wei bing xue za zhi* 2009, **15**:4444-4445.

doi: 10.1186/1748-717X-5-60

Cite this article as: Ji et al., Helical tomotherapy with concurrent capecitabine for the treatment of inoperable pancreatic cancer *Radiation Oncology* 2010, **5**:60

Submit your next manuscript to BioMed Central and take full advantage of:

- Convenient online submission
- Thorough peer review
- No space constraints or color figure charges
- Immediate publication on acceptance
- Inclusion in PubMed, CAS, Scopus and Google Scholar
- Research which is freely available for redistribution

Submit your manuscript at
www.biomedcentral.com/submit

